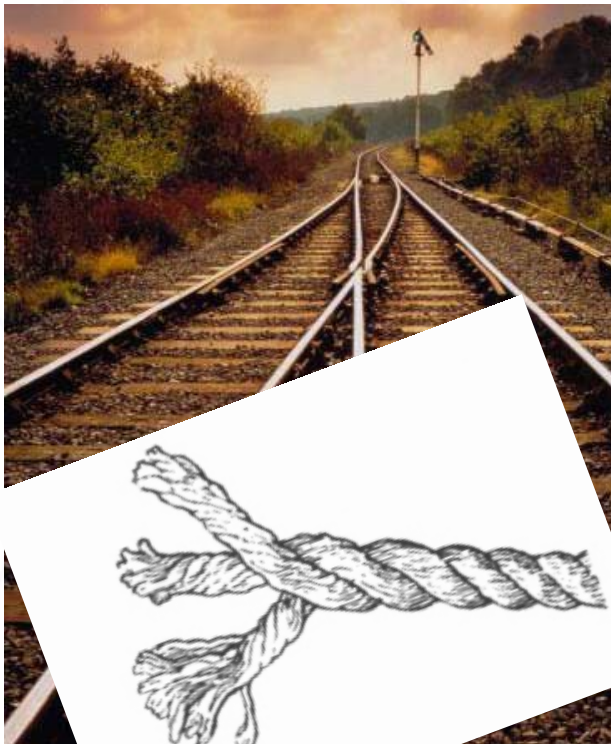


Win€UR CONSOLIDATION

Microsoft
CERTIFIED
Partner



PRODUCT DESCRIPTION



You are running several companies with WinEUR...

Do you need to produce consolidated results (Balance Sheet, Profit and Loss statement)?

Do you have to be able to explain the consolidated results ?

Do you want to analyse your figures by company ?

Do the auditors want to check any modifications, adjustments or eliminations made on your consolidated results ?

Then the new consolidation module is the tool you need, as it provides WinEUR accounting with the required extensions.

THE ADVANTAGES

WinEUR Consolidation is based on 2 axes

- 1. WinEUR Consolidation** automatizes the performance of a Group accounting system.
- 2. WinEUR Consolidation** extends the functions of reports by adding the « Companies » dimension with the inclusion of a « Consolidation » tab, where the user ticks the companies to be analysed (consolidated reports).

Win€UR Consolidation

is a member of the **Win€UR** family :

Programmes :

- Win€UR First.
- Win€UR Accounting.
- Win€UR Invoicing.
- Win€UR Invoicing & Stocks.
- Win€UR Salaries.
- Win€UR Time Sheet.

Modules :

- Win€UR Analytical accounting.
- Win€UR Portfolio management.
- Win€UR Budgets.



Gestion & Informatique pour Tous S.A.

Tél. : +41-022-309 39 88

Fax : +41-022-309 39 89

24, rue Le-Royer
e-mail : info@git.ch

1227 Genève/Suisse
TVA N° 145 490

www.git.ch

Win€UR CONSOLIDATION

25 January 2004

CODE PRODUCT : WCO

1. WinEUR Consolidation automatizes the performance of a Group accounting system.

- A group is a company like any other, with its own book-keeping currency and its own chart of accounts.
- A table enables you to indicate the composition of each account in the chart of accounts, in other words which accounts or group of accounts of each subsidiary should be picked up (formulas).
- The group is not obliged to have the same chart of accounts as the subsidiaries, nor the same book-keeping currency.
- You also have the option of indicating for each member company of the group what is the percentage of participation (minority interests)

Specific tools allow you to book in the group accounts in the form of accounting entries (justification)

- The opening Balance Sheet. An entry is created automatically with one line per subsidiary for each account of the group balance sheet.
- The movement for each period. For each group account, an entry is created automatically with one line per subsidiary, allowing the recording of the cumulative movement of the period. The choice of the period is free (usually monthly)

As a Group is a company like any other, it is possible to use **all the possibilities offered by WinEUR accounting**

- printouts and reports
- revaluations of foreign currencies, which are indispensable when consolidating accounts in different book-keeping currencies or when the group currency is not the same as that of the subsidiaries.
- interest on current accounts
- entries (audit-trail of all adjustments and eliminations)
- consolidation ! This allows you to consolidate on as many levels as needed.

2. WinEUR Consolidation extends the functions of reports.

The following reports contain this function:

- column type reports (accounts, analytical accounts, clients, invoices, journal, securities). A type of column allows you to indicate the company and thus the source of an element, or to make a sub-total by company.
- line type reports (Balance Sheet and P&L)
- « Fixed Page » reports. This allows you to produce summary information on different companies on the same document.

Win€UR Consolidation

is a member of the Win€UR family :

Programmes :

- Win€UR First.
- Win€UR Accounting.
- Win€UR Invoicing & Stocks.
- Win€UR Salaries.
- Win€UR Time Sheet.

Modules :

- Win€UR Analytical accounting.
- Win€UR Portfolio management.
- Win€UR Budgets.

MINIMUM CONFIGURATION (Recommended)

LOCAL PC :

- PC Pentium 200Mhz (1Ghz),
- 64Mb RAM (256Mb),
- 100Mb disk space (1Gb),
- Microsoft Windows 95 or more recent (Windows 2000 Prof. or XP)

NETWORK :

- Microsoft Windows NT4.0 or more recent,
- Windows Terminal Server (40Mb RAM/User),
- Novell Netware 4.0 or more recent,
- Network Ethernet 10 Mbits (100 Mbits)



Gestion & Informatique pour Tous S.A.

Tél. : +41-022-309 39 88

Fax : +41-022-309 39 89

24, rue Le-Royer
e-mail : info@git.ch

1227 Genève/Suisse
TVA N° 145 490

www.git.ch